

1 8 9 5



2 0 2 5

IMPULSE

/// Annual Report 2025

CONTENTS

Our foundation

Facts and figures	p. 4-5
Strategic investment	p. 6-9
130 years of Gföllner	p. 10-13

Our DNA

Technical containers	p. 14-25
Railway technology	p. 26-31
Vehicle construction	p. 32-39
Mobile container solutions	p. 40-43

Our heartbeat

Employee motivation	p. 44-45
Recruiting campaign	p. 46
Partnerships & networks	p. 47

Imprint:

Media owner and publisher:

Gföllner Fahrzeugbau und Containertechnik GmbH
Industriepark Stritzing 10
4710 Sankt Georgen bei Grieskirchen, AT

Graphic concept and design:

ARTINA graphic & design
Haidermühle 52, 5310 Mondsee

Photos: Gföllner, PIXERO, Plasser & Theurer, iStockPhoto,
tecbox, EPAMEDIA, raumpixel.at, weda3D, sportshot.

Publication: April 9, 2026

INTERNATIONALIZATION AND GROWTH

FOREWORD OF THE MANAGEMENT

The 2025 fiscal year was marked by clear decisions and consistent growth in a challenging market environment.

The founding of **IGPS – INNIO Gföllner Power Systems LLC** marked a key step toward internationalization and scaling. The assembly of containerized energy solutions directly in the North American market represents a logical evolution of our business model. Our technical standards and manufacturing processes remain unchanged—they form the foundation of this step.

At the same time, the existing production structure was systematically enhanced. Investments in infrastructure, machinery, and the work environment are sustainably strengthening the performance of our sites.

Technical containers has once again proven to be our **strongest growth driver**. Projects in the fields of energy supply, data centers, and railway technology demonstrate that containerized system solutions are increasingly becoming the standard in critical infrastructure.

We have used the **challenging market environment in vehicle manufacturing** to realign our focus—with a clear emphasis on sectors such as the food industry, the construction sector, and the municipal sector.

With the **BlackLine series**, we established a product segment in the **rental container** sector that can be used year-round. The high demand for winter events and winter sports confirms the wisdom of this move.

2025 was also a special year: Gföllner celebrated its **130th anniversary**. Since 1895, the company has stood for continuous development. Consistency does not come from standing still—but from change.

We thank our employees, customers, and partners for their collaboration and trust over the past year.

**Together.
Successful.
Strong.**



Management Team (from the left): Prok. Ing. Roman Predl MBA, KommR Thomas Gföllner, Dipl.-Ing. (FH) Karl Pühretmair, Prok. Dipl.-Ing. Karl Höftberger, Prok. MMag. Klaus Mistlberger

NUMBERS, DATA, FACTS

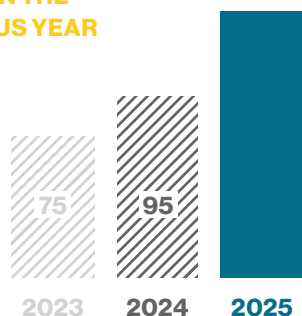
COMPANY PROFILE

The key figures for the 2025 fiscal year reflect Gföllner's economic development and industrial performance. They form the basis for further growth and highlight the company's international focus, investment activities, and the evolution of its production structure.

Turnover

€143 million

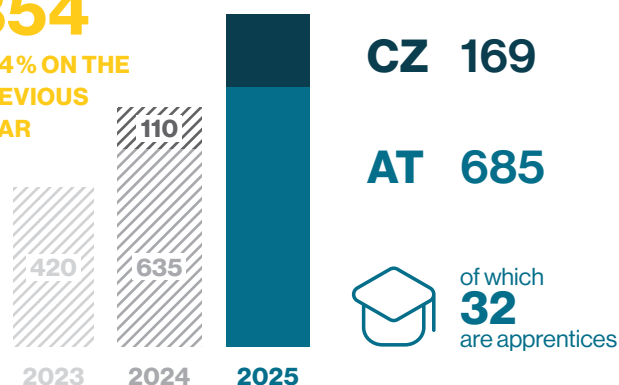
+ 49% ON THE PREVIOUS YEAR



Employees

854

+ 34% ON THE PREVIOUS YEAR



€7.9 million

Investments



1,000km

Cable consumption



89.8%

Export ratio



6,000t

Steel consumption

Production area at 5 locations

68,500m²

IGPS JOINT VENTURE
TRENTON | US

HEADQUARTERS
ST. GEORGEN BEI GRIESKIRCHEN | AT

PRODUCTION SITE IN
WEIBERN | AT

PRODUCTION SITE IN
DIERSBACH | AT

BRANCH IN
ROZVADOV | CZ

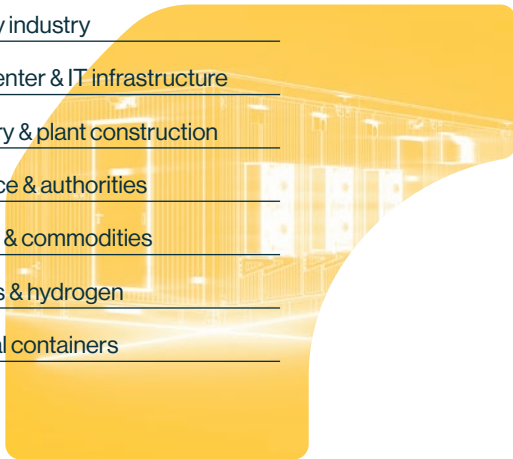
PRECISION IN MOTION

CUSTOMIZED SOLUTIONS FOR DEMANDING APPLICATIONS

Gföllner is synonymous with production that combines technical expertise with depth. The close integration of design, manufacturing, and project management enables us to deliver reliable and scalable solutions—from individual projects to series production. This synergy forms the foundation for our four areas of expertise: technical containers, railway technology, vehicle construction, and mobile container solutions.

TECHNICAL CONTAINERS

- Energy industry
- Datacenter & IT infrastructure
- Industry & plant construction
- Defence & authorities
- Mining & commodities
- Oil, gas & hydrogen
- Special containers

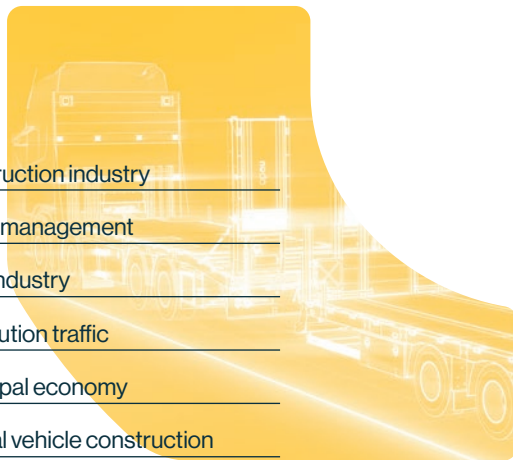


RAILWAY TECHNOLOGY

- Cabin construction for rail vehicles
- Mobile workshops & auxiliary trains
- Special rail vehicles



- Construction industry
- Waste management
- Food industry
- Distribution traffic
- Municipal economy
- Special vehicle construction



- Mobile room solutions
- Mobile event solutions



VEHICLE CONSTRUCTION

MOBILE CONTAINER SOLUTIONS

STRATEGIC EXPANSION OF THE PRODUCTION STRUCTURE

INTERNATIONALIZATION, GROWTH, AND SCALING

For Gföllner, the 2025 fiscal year was marked by targeted internationalization, structural growth, and technical advancement. With the founding of **IGPS as a joint venture with INNIO**, a strategic step was taken toward decentralizing and scaling up production. At the same time, the existing production structure at other locations was specifically expanded and modernized.



First technical container completed in the USA

“We don’t just build a new site. We export our manufacturing expertise.”

KARL PÜHRETMAIR
CEO



Team Trenton: The team behind IGPS

JOINT VENTURE USA— PRODUCTION CLOSER TO THE CUSTOMER

IGPS – INNIO Gföllner Power Systems

With the founding of IGPS, Gföllner and INNIO are taking a strategic step forward. The goal of the joint venture is to produce and assemble containerized energy solutions closer to customers in the U.S.—with greater flexibility, availability, and delivery capability.

INNIO contributes its high-performance Jenbacher gas engines. Gföllner is responsible for developing the kit concept and containerizing the systems directly on-site. This clear division of responsibilities pools existing expertise and creates efficient industrial processes. Production of the container modules at the Trenton, New Jersey, site began in late 2025.

The establishment of IGPS is part of an overarching strategy: International production structures are not built in isolation, but rather systematically built upon existing processes, quality standards, and manufacturing logic. This ensures that Gföllner’s industrial DNA is preserved even as production volumes grow.

**KARL
HÖFTBERGER**
COO IGPS



“With IGPS, we are creating a production structure that combines scalability, quality, and customer proximity. Crucially, our technical standards and processes remain unchanged.”

IGPS location in Trenton, New Jersey (USA)



GOALS FOR 2028

- **Production capacity:** over 1 GW annually
- **Jobs:** more than 200 new jobs

EXISTING SITES TARGETED FOR FURTHER DEVELOPMENT

Investments in Infrastructure, Work Environment and Collaboration

In parallel with its international expansion, Gföllner made targeted investments in the further development of existing locations in 2025. A visible sign of this is the redesign of the reception area, which serves as a central hub for customers, partners, and employees. In addition, training and meeting rooms, as well as existing break areas and coffee kitchens, were modernized. These measures strengthen communication, knowledge transfer, and structured collaboration within the company.



Welcome area: Bright reception with clean architecture



Coffee Corner: A place for quick chats



Training room: A space for exchange and professional development



TARGETED EXPANSION OF MANUFACTURING CAPACITY

Three new press brakes for greater precision and capacity

The expansion of the machine fleet is a key component of the ongoing development of the production structure. In fiscal year 2025, three new press brakes from the manufacturer TRUMPF were put into operation. They increase capacity, precision, and process stability in sheet metal processing and enable the cost-effective fabrication of a wide variety of components.

Models	Press force	Bending length	Special features
TruBend 5320	320 tons	4.0m	Versatile for medium-volume production
TruBend 8600	600 tons	4.0m	Second machine of this size in Upper Austria
TruBend 5230	230 tons	4.3m	Optimized for longer components

The existing press brakes, which remain fully functional, will be used at the Rozvadov plant (CZ) in the future, where they will specifically contribute to expanding capacity within the corporate group.

A new TRUMPF TruLaser 1040 laser system with Liftmaster was also installed at the same location, to further reduce throughput times and automate material handling.



New laser machine from Trumpf at the Rozvadov (CZ) site



Delivery of the new Trumpf press brakes to the main location in St. Georgen bei Grieskirchen.

PLANNED INVESTMENTS FOR 2026

- **Laser cutting system and Liftmaster** from Trumpf
- **Expansion of production halls**
- **Truck Check-In** for deliveries and pickups
- **Warehouse and production areas**
- **Parking spaces and offices** for employees

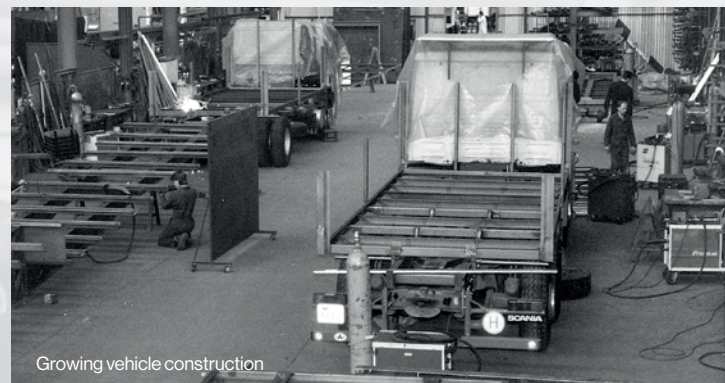
130 YEARS. NO STANDING STILL.

SINCE 1895, CONSISTENCY AT GFÖLLNER HAS ALWAYS BEEN CONNECTED TO CHANGE

/// 130 years of company history mark a special milestone. But at Gföllner, an anniversary has never been a reason to look back or stand still—rather, it has always been a moment to look ahead. Because anyone who has thrived since 1895 knows this: consistency does not come from clinging to the past—but from the ability to evolve. Demands change. Technologies evolve. Markets become more complex. And that is precisely what has been the foundation of our actions for 130 years.



Early manufacturing in vehicle construction



Growing vehicle construction



Mobile container solutions: construction trailers



LOOKING AHEAD, NOT BACK

The history of Gföllner is a story of adaptation. What began as a blacksmith's shop for horseshoes and wagons evolved over generations into a specialized industrial company.

Materials, technologies, and applications have changed—but the commitment remains the same: to build structures that stand the test of everyday life.

This growth was never linear. It was marked by developmental steps, by challenges—and by projects that often went far beyond the standard.

“Each generation has further developed the company for its time—not by standing still, but through bold decisions.”

THOMAS GFÖLLNER

From craftsmanship to industrial manufacturing

The early days were marked by craftsmanship. Today we create systems that go far beyond that—complex vehicle bodies and custom container systems.

“Every project is different. Experience is key to successfully meeting even complex requirements.”

FRANZ DUNZINGER

HEAD OF PRODUCTION, VEHICLE MANUFACTURING

45 YEARS WITH THE COMPANY

From Steel Construction to System Integration

At the same time, traditional steel construction continued to evolve—toward highly integrated technical systems. Containers are far more than just steel structures: They combine electrical engineering, HVAC, and control systems into fully functional modular units.

“The technical requirements for our plug-and-play solutions have increased significantly in recent years—from traditional smart homes to multi-story systems with complex system integration. The positive customer feedback confirms our corporate philosophy—something we, as “#Team Gföllner,” can be proud of.”

GERALD SCHÜTZENBERGER

SENIOR ELECTRICAL ENGINEERING EXPERT

32 YEARS WITH THE COMPANY

From a Regional Business to a Global Partner

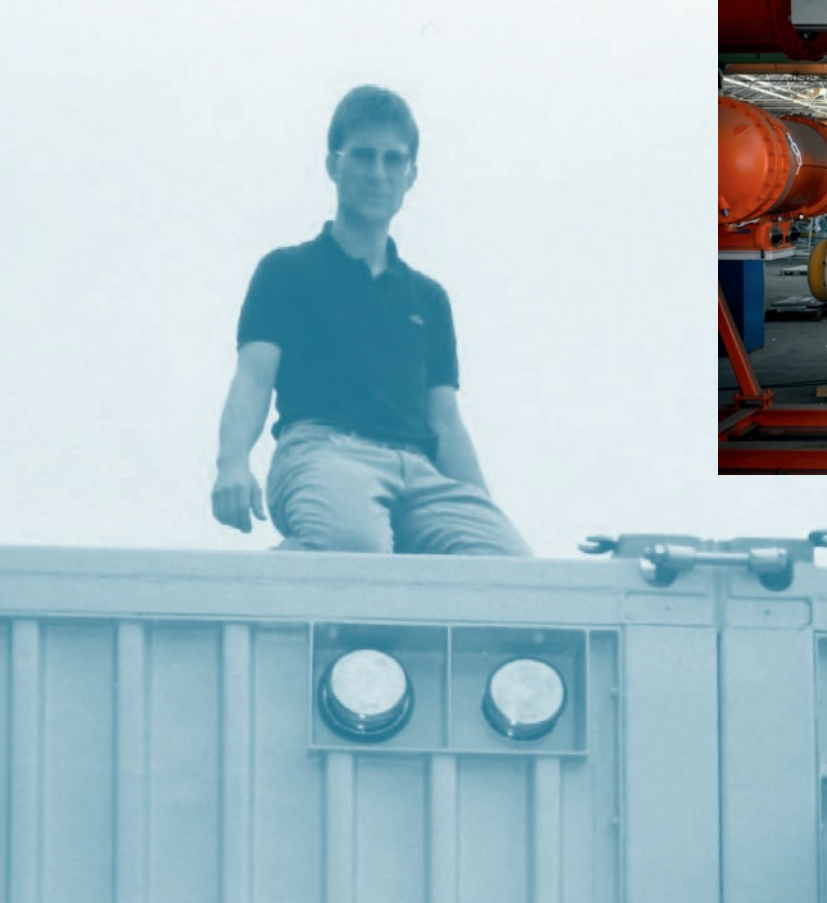
As the company's technology advanced, its geographic reach expanded as well. What began as a regional business grew into an international company with projects on every continent.

“Our projects have always been international in scope. But today's requirements are significantly more specific and complex—ranging from extreme operating conditions to highly sophisticated technology housed in containers. Here in Stritzing, we have created the ideal location to best meet our customers' growing demands in terms of size and weight.”

CHRISTINE BAUMGARTNER

SALES TECHNICAL CONTAINER

40 YEARS WITH THE COMPANY



Thomas Gföllner in action



Thomas Gföllner engaging in on-site discussions

EXPERIENCE THAT LASTS

Thomas Gföllner's personal story is closely intertwined with this development. Having worked at the company since 1983, he started as a technical draftsman and worked his way through nearly every department—from purchasing and project costing to management, a role he assumed in 1993.

This broad experience continues to shape his perspective on the company to this day. With Karl Pühretmair joining the management team in 2006, the company's further development was placed on a broader footing. What unites them both is a clear shared vision.

*/// Hand over responsibility,
secure the foundation.*



” The key thing is that we've always known where we're going. “

**THOMAS
GFÖLLNER**
CEO

” Collaboration works like a good partnership—based on trust and a shared approach. “

**KARL
PÜHRETMAIR**
CEO

PROJECTS WORLDWIDE—UNDER DIFFERENT CONDITIONS

Gföllner's growth is evident not only in numbers—but in projects. From generator containers in Alaska to plant installations in India, and projects in the Middle East, Europe, and North America. Some of these were technically demanding. Others were logistically challenging.

One of the most memorable experiences was a trip to Nigeria—a 480-kilometer journey through the jungle to reach a plant and check whether a repair was possible.

THOMAS GFÖLLNER

For our client Schaller Austria, we built containerized bakeries, dairies, and slaughterhouses in Russia and the former Soviet Union—in regions where there had previously been no such infrastructure.

They had nothing there. And with our container solutions, we made basic services possible.

That wasn't a standard project—that was something that will last.

THOMAS GFÖLLNER



Working in icy conditions

A mobile tower was created for the Austrian Armed Forces—now on display at the Museum of Military History. Another project demonstrated just how broad the spectrum can be: In 2001, Gföllner collaborated with architect Peter Haimerl to develop the mobile studio “Cocobello” – presented at the Architecture Biennale in Rotterdam and the Designparcours in Munich.

Sometimes the most interesting projects came from the most unexpected places. On the Cocobello, we worked until four in the morning—I was at the lathe—but it was finished. Right on schedule.

THOMAS GFÖLLNER



Project “Cocobello”

INTERNATIONALIZATION AS A LOGICAL STEP

The increasing internationalization of the customer base also necessitated further structural development. With the founding of IGPS in 2025, a production facility in the USA—a step that strengthens our proximity to the market without compromising our own quality standards.

Our customers operate globally—and expect availability on site.

KARL PÜHRETMAIR

/// The company has been in business for 130 years. Not because it has always stayed the same. But because it has always known what it wants to remain.

/// Precision in motion. Since 1895.

/// Gföllner develops and manufactures technical container solutions for critical energy and infrastructure projects worldwide. The focus is on scalable systems for power generation, grid stabilization, data centers, and industrial applications.



TECHNICAL CONTAINERS

/// CONTAINERS FOR MOBILE SOLUTIONS OF THE FUTURE

INDUSTRIES IN FOCUS

/// Our technical containers are used worldwide in numerous industries.

Energy industry (Supply & Distribution)

E-House solutions, transformer and switchgear systems in technical containers—modular, weatherproof, and ready for immediate operation.

Data centers & IT infrastructure

Containerized data centers and server rooms—scalable, mobile, and highly available.

Industry & plant construction

Modular container construction for control systems, power supply, and plant engineering—seamlessly integrated into your processes.

Defense & authorities

Technical containers and shelters for operations command, communications, or medical care—secure, mobile, and robust.

Mining & commodities

Technical containers for extreme environments—protected, transportable, and durable.

Oil, gas & hydrogen

Whether it's natural gas, crude oil, or hydrogen: Gföllner technical containers protect sensitive systems under the most demanding conditions.

Special containers

Specialized containers for individual requirements—custombuilt to meet your technical challenges.

**ROMAN
PREDL**
CSO



“In the past fiscal year, we implemented a large number of containerized switchgear and motor systems for international data center projects. These are designed for high availability, short commissioning times, and standardized integration into existing infrastructures. This demonstrates that energy generation and distribution are and will remain key markets of the future—and we have the technical expertise to implement these capabilities in a scalable manner.”

FUTURE TRENDS & INNOVATION

/// A look at the global delivery locations for our technical containers in 2025.



TRENDS IN IN CONTAINER TECHNOLOGY

The global market for modular container solutions is experiencing dynamic growth. Key drivers include the expansion of data centers, increasing AI computing power, and global grid expansion. Higher power densities and rising availability requirements are boosting demand for containerized power and e-house solutions.

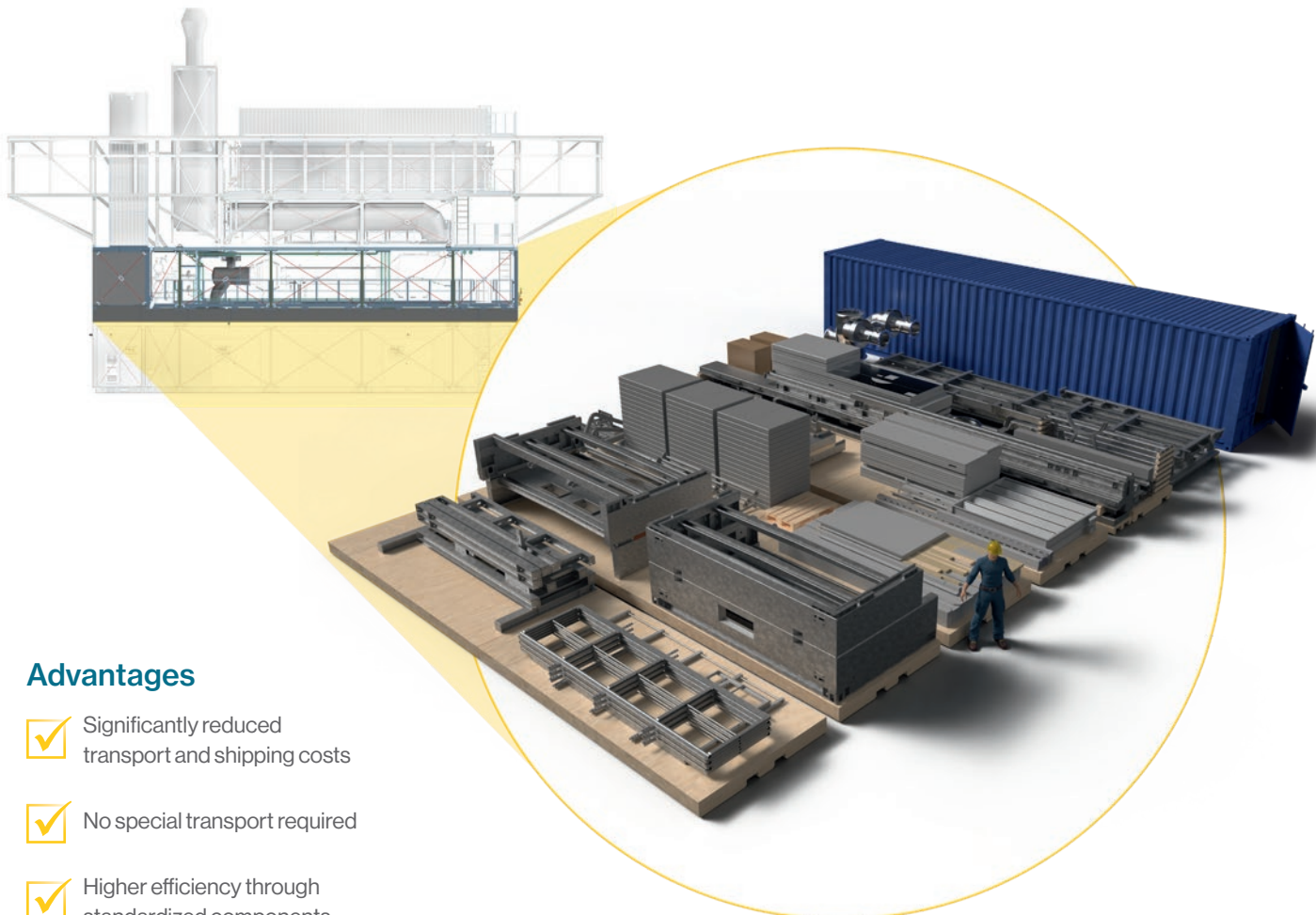
At the same time, the expansion of power grids and decentralized energy infrastructure is increasing demand for containerized power, switching, and transformer modules. Thanks to their modular design, short installation times, and high scalability, containerized systems are increasingly becoming the industry standard for critical infrastructure.

INNOVATION CONTAINER KIT

A new standard in plant engineering

With its container kit, Gföllner is industrializing the implementation of technical infrastructure solutions. Instead of pre-assembled large modules, the systems are delivered as transport-optimized kits in individual parts within standard 40-foot shipping containers. The components are assembled at the destination and then integrated into the technical infrastructure. This approach reduces transport volume, eliminates the need for special transport, and enables structured assembly, even under local conditions. The high proportion of standardized identical parts in intelligently packaged delivery kits reduces complexity and the variety of variants. At the same time, it increases repeatability in manufacturing and efficiency in procurement and project management.

The container kit is thus a scalable concept for international projects, particularly when local content requirements apply, and contributes significantly to reducing logistics costs.



Advantages

- ✓ Significantly reduced transport and shipping costs
- ✓ No special transport required
- ✓ Higher efficiency through standardized components and processes
- ✓ Shorter project durations through structured prefabrication
- ✓ More sustainable logistics through optimized volume utilization
- ✓ High scalability for global markets
- ✓ Increased local content ratio through on-site assembly and integration

CAD-based packaging design for a single module (AUX module)—optimized for transport in standard 40-foot containers.

CURRENT SUCCESS STORIES & REFERENCES

SUCCESS STORIES

LV Enclosures for Data Centers, Finland

Industry: Energy industry

Requirement: Specialized low-voltage enclosures are required for the power supply of data centers. The enclosures house switchgear, control systems, and cable routing and protect the electrical infrastructure under industrial operating conditions. To date, 180 units have been ordered.

Implementation: The base frames are manufactured automatically by welding robots – precisely, with repeatable accuracy, and designed for series production. During the subsequent final assembly, each unit is fully completed and tested. Before delivery, all enclosures are securely packaged in shrink wrap for transport and shipped to the end customer.



Functional Modules for AXPO – Beznau Project, Switzerland

Industry: Energy industry

Requirement: As part of the UW BEZNAU Phase 2 project, AXPO required two fully prefabricated functional modules—16 kV switchgear containers—as part of the UW BEZNAU Phase 2 project. The modules were to be integrated into the existing substation and support the modernization of the medium-voltage level. The requirements included maximum reliability, precise prefabrication, and on-time delivery to the construction site.

Implementation: Gföllner produced both modules on a turnkey basis, including complete functional testing and documentation. With the two new units, there are now 10 Gföllner containers in Beznau—further evidence of the successful, long-standing collaboration with AXPO.



Modular E-House with integrated HVAC system, Sweden

Industry: Energy industry

Requirement: The project called for a modular switchgear or substation in a containerized design with EI60 fire protection, meaning 60 minutes of fire resistance from the inside out. However, fire protection alone is not enough: without technical cooling, there is a risk of overheating, failure, and, in extreme cases, total loss. At the same time, the system had to be installed on a raised foundation level of 1.5 meters—with safe access via platforms and staircases.

Implementation: The E-House was prefabricated as a modular unit, preconfigured, and delivered ready for installation. The system combines structural fire protection, technical cooling, and safe accessibility in a comprehensive, integrated concept. The integrated HVAC split system provides technical cooling with a redundant design and combines the functions of ventilation, cooling, and dehumidification in a single system.

It is installed on a raised foundation of 1,500mm. Two sets of stairs and platforms provide safe access to both container modules (each measuring 9×3.5×3.6 meters (L×W×H)).



Mobile power plant containers for large-scale data centers, USA

Industry: Data centers

Requirement: A large-scale data center required a reliable on-site power supply—both for continuous operation (prime power) and as a backup in the event of an emergency.

The challenge: No long construction times and no stationary foundations. A containerized, modular solution was required that could be delivered by truck, set up on-site, and put into operation immediately.

Implementation: Gföllner implemented the system as a modular container power plant consisting of several functional units.

In its final configuration, the system achieves a total capacity of 400MW—scalable, highly available, and designed for use in hyperscale data center locations.



E-House container complex on supports, Greece

Industry: Energy industry

Requirement: For an energy project in Greece, several E-House containers were needed to house electrical distribution, HVAC systems, and auxiliary equipment.

A key requirement was elevated installation on supports. Additionally, a robust design and defined technical standards: IP54 protection rating, climate control with ventilation, cooling, and dehumidification, as well as a corrosion-resistant coating for long-term operation under demanding climatic conditions.

Implementation: A total of 8 containers were designed and manufactured for the project. Each unit was mounted on a support-and-platform system—not at ground level, but elevated. This provides additional protection, for example against flooding, while ensuring optimal accessibility for operation and maintenance.



Mobile Switchgear Containers, Germany

Industry: Energy industry

Requirement: For an infrastructure project in Bavaria, 8 mobile 20kV switchgear containers were required for the conversion and renovation of existing substations. The containers protect electrical components from mechanical, climatic, and operational influences in industrial environments and enable flexible, location-independent deployment.

Implementation: The containers were manufactured as fully welded units—which are dust-proof, splash-proof, and non-combustible. With dimensions of approximately 14×3×4 meters (L×W×H) and a weight of 12.5 tons, they are suitable for mobile use within existing grid structures.

All eight units were manufactured with a blue coating and delivered ready for transport. The MV switchgear panels, the auxiliary transformer, and the LV switchgear—including all switchgear cabling—are already integrated into the container. A unique feature of this project is the medium-voltage interface on the outside of the container. This allows connections as well as service and maintenance work to be carried out efficiently from the outside.





E-House container solution for production facility, France

Industry: Industry & plant construction

Requirement: ROCKWOOL is investing in the conversion of its rock wool insulation production facilities to replace fossil fuels with electrical energy and reduce CO₂ emissions. The focus is on the electrification of the melting furnaces. Three containers were needed to house the electrical infrastructure for a plant in Saint-Éloy-les-Mines (France).

Implementation: Gföllner manufactured three 12-meter-long converter containers for power distribution and plant supply. The units were fully prefabricated and integrated into a steel framework on-site. The concept is designed as a scalable solution and is intended for use in additional plants in the future.



Technical shelters for air traffic control systems

Industry: Special containers/aviation industry

Requirement: To ensure safe flight operations, radio beacons are installed at the beginning and end of runways. These communicate with aircraft and assist pilots with speed and altitude during takeoff and landing. The sensitive equipment must be housed in climate-controlled shelters with a reliable power supply.

Implementation: Gföllner supplied turnkey shelters with external dimensions of 12×4 meters, including air conditioning and an integrated emergency power supply. The units were installed directly adjacent to the runway. In addition, a shade canopy with a photovoltaic system was installed on-site to system's energy requirements.



Cabin solution for barrier-free passenger transport (PRM) in airport use, Austria

Industry: Special containers/airport logistics

Requirement: A cabin with longitudinal suspension for side-loading forklifts was developed for barrier-free passenger transport at airports. Wheelchair users and their companions must be transported safely and comfortably between the aircraft and the terminal.

Implementation: The cabin was constructed as a fully welded steel frame structure with large-area glazing. An integrated lifting and lowering function allows for adjustment to different aircraft heights. An extendable front platform facilitates safe docking. The unit was fully prefabricated and delivered ready for integration at the customer's site.



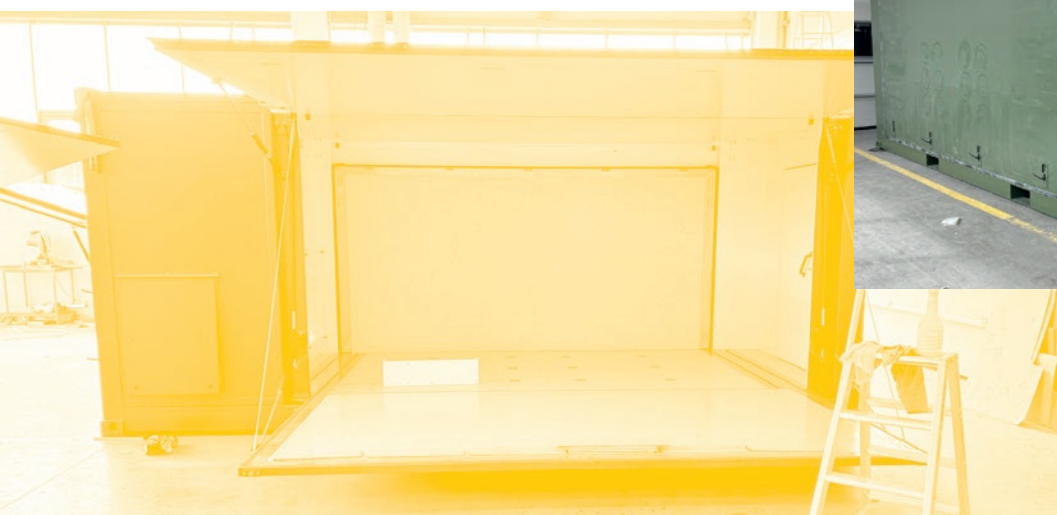
Mobile Hospital – Shelter Solution, Austria

Industry: Defense & authorities

Requirement: Mobile shelters were once again manufactured for a long-standing customer in the defense sector—this time as mobile field hospitals for use under demanding conditions.

The layout was specified by the customer, and the technical requirements were precisely defined: a robust design for military use, conductive flooring to dissipate electrostatic charge, a door with a flap and weather protection grille, as well as foldable floor and roof elements on both long sides to expand the space on-site. The paint finish was applied in the typical military green tones as specified.

Implementation: The shelters were manufactured with compact dimensions of approximately 6 × 2.4 meters in accordance with 20-foot CSC specifications—they are transportable, stackable, and quick usable. The actual functionality becomes apparent only on site: The foldable side sections on both long sides allow the usable space to be significantly expanded.



TECHNICAL CONTAINER MEETS VEHICLE CONSTRUCTION

MOBILE ENERGY ON THE GO

In recent years, Gföllner has specifically combined its expertise in technical container and vehicle construction. Customers no longer need static installations—they need mobile system solutions that can go where energy is needed.

Several special trailers designed to accommodate electrical power modules were developed and manufactured for the U.S. market. The goal was a mobile, ready-to-use solution for voltage stabilization—designed to U.S. standards, engineered for maximum loads, and built for North American road traffic.

Trailers made by Gföllner

Trailers with up to five steered axles and dollies were designed and manufactured, specifically engineered for heavy-duty containers with integrated power infrastructure.

The technical challenge was to create not just simple trailers, but mobile power stations. Reinforced chassis for extreme loads, a steel structure tailored to the structural requirements, and the complete integration of the electrical infrastructure formed the foundation. By adding a hydraulic Tridec steering system—including the option for remote-controlled steering—a highly maneuverable, ready-to-use system solution was created, developed and manufactured in-house by Gföllner.

/// High-performance system solutions through the combination of two core competencies.

WHY GFÖLLNER IMPRESSES

- **Mobile, ready-to-use power systems**
- **Shorter commissioning times**
- **Maximum flexibility for infrastructure projects**
- **Complete solution from a single source**



PRODUCED IN AUSTRIA—USED IN THE U.S.

PICKUP



Produced in Stritzing, approved exclusively for the North American market. Once completed, it was transported to the Port of Hamburg.

TRANSPORT

The European lighting was temporarily installed for the transfer voyage to the Port of Hamburg.



ARRIVAL IN THE U.S.



Shipment is made directly to the site of use—where the trailers (with steerable axles) are immediately ready for use.

/// Rail transport places the highest demands on technology, quality and reliability. Gföllner has been an established manufacturing and systems partner in the rail industry for many years ranging from cabins and car components to modular container solutions for railway applications.



RAILWAY TECHNOLOGY

**/// DESIGN AND MANUFACTURING
FOR USE IN RAIL TRANSPORT**

INDUSTRIES IN FOCUS

/// Customized technology and solutions for railway projects.

Cabine construction for rail vehicles

Control, work, and communication cabs for maintenance and special-purpose vehicles.

Mobile workshops & service trains

Fully equipped mobile units for maintenance, repair, and operations on the rail network.

Containers for railway applications

Modular container solutions for power converters, rectifiers, and secondary systems.

**ROMAN
PREDL**
CSO



” Last year, we successfully completed several major projects in the field of railway technology and secured new orders. The continuous demand shows that we are perceived as a reliable and established partner in this segment. Currently, further pioneering projects in progress. “

CURRENT CASE STUDIES & REFERENCES

SUCCESS STORIES

Successful handover: Two auxiliary trains (AOC) for Deutsche Bahn

In September 2025, two application-oriented containers (AOC) were successfully handed over to DB InfraGO. The units will be used on the Berlin and Hamburg S-Bahn networks in the future.

The containers were developed based on the MTF-17 and were specifically tailored to Deutsche Bahn's requirements as well as the reduced clearance gauge.

Technical Features

- Utilization of the MTF-17's offset design for optimal space utilization
- Application: Berlin and Hamburg S-Bahn
- Electrical installation in side walls, ceiling, and floor due to limited overall height
- In addition to the diesel generator, a 10kWh battery is integrated for emission-free power supply during tunnel operation
- Full compliance with **EN 45545**, including comprehensive documentation and testing

The containers have a modular and zoned design—for example, as a work area, crew module, or equipment room—and allow for flexible adaptation to various operational scenarios in rail operations.

Flexible layout into different functional areas—e.g., as a workspace, staff area or utility room. Typical features: Custom-designed systems for railway use.



“During the planning phase, we never heard the phrase “it can't be done”—solutions were always found. The project was delivered on time and remained within the planned budget.”

DB INFRAGO



PROJECT FACTS

- **Handover:** September 17, 2025, Fulda
- **In service:** Berlin and Hamburg S-Bahn
- **Bogie:** MTF-17
- **Customer:** DB InfraGO



Major Order: SBB rail workshop car for maintenance

With this order from Swiss Federal Railways AG (SBB), Gföllner secured one of the largest single orders in the company's history. SBB commissioned the delivery of 30 rail workshop car for maintenance. The so-called personnel and workshop vehicle (PWFZ) consists of a carrier wagon and the AOC (application-oriented container), which are coupled together on the tracks and subsequently deployed in Switzerland.

Project Overview

- **Vehicle type:** Personnel and Workshop Vehicle (PWFZ)
- **Scope:** 30 vehicles
- **Delivery period:** Late 2025 to spring 2028
- **Application:** Maintenance work on the rail network

Production is already in full swing.



Raw cabins for maintenance machines

Gföllner has been manufacturing raw cabins for railway maintenance machines for Plasser & Theurer for several years.

Project Overview

- **Volume:** approx. 30 cabins per year
- **Production in 2024:** around 70 cabins
- **Design:** Rear and front cabins, work cabins, and doors

Manufacturing is carried out to certified quality standards and with high repeatability—designed for long-term series production.



Container modules for fast-charging infrastructure, Ireland

Industry: Energy industry/railway technology

Requirement: As part of the Dublin Area Rapid Transit (DART) project, a containerized fast-charging station for battery-powered trains (BEMU) is being built in Drogheda. The goal is to support a more sustainable, electrified rail infrastructure.

The project required 7 container modules to house DC switchgear, converter systems, and battery storage units—including technical climate control. Depending on their function, the containers vary in length from approximately 9 and 14 meters, with widths of 3 to 4 meters and a height of around 3.5 meters.

Implementation: A modular container system designed for industrial railway applications was implemented. The containers were equipped with removable hoods—an advantage during installation and cabling that significantly reduces assembly times and enables optimal accessibility during commissioning.



/// Vehicle construction encompasses custom-built superstructures, trailers, and special-purpose vehicles. The designs are precisely tailored to their respective applications and are characterized by high functionality and robustness.



VEHICLE CONSTRUCTION

**/// EXPERTISE IN MOTION—VEHICLES, LOADING
TECHNOLOGY, AND TRAILERS**

INDUSTRIES IN FOCUS

/// Our products combine functionality, quality, and cost-effectiveness—perfectly tailored to the needs of various industries.

Construction industry

Robust truck bodies and trailers, individually equipped with crane systems and loading ramps for efficient loading and unloading.

Waste management

Container trailers and swap body systems, recycling cranes and special bodies, such as glass collection trucks, offer high payload capacity and durability.

Food industry

Refrigerated box and folding-wall bodies in hygienic designs—supplemented by tail lifts for fast logistics processes.

Distribution traffic

Sliding tarpaulin, folding wall, and box bodies optimized for frequent loading stops—maneuverable, efficient, and flexible in use.

Municipal economy

Specialized vehicles for municipalities, infrastructure, and emergency response organizations—robust and reliable even under heavy loads.

Special-purpose vehicle construction

Custom-built vehicles for specific requirements—from mobile brake test stands to mobile transformer stations.

**JAKOB
ZAUNER**
HEAD OF VEHICLE
CONSTRUCTION
AND LOADING
TECHNOLOGY



” In the past fiscal year, we successfully completed numerous projects in the construction, logistics, and food industries. Going forward, we will continue to focus on developing vehicle solutions that deliver outstanding performance in daily use: they are designed with sustainability in mind, implemented cost-effectively, and precisely tailored to our customers’ needs.”

MORE THAN VEHICLE CONSTRUCTION

SERVICE THAT THINKS AHEAD

Vehicles in commercial use must function flawlessly every day.

That is why Gföllner sees itself not only as a manufacturer but also as a long-term service partner. We support vehicles throughout their entire lifecycle: from consulting and design to manufacturing and maintenance. Our goal is to minimize downtime and ensuring long-term operational readiness. With trained specialists, state-of-the-art workshop equipment, and genuine parts, we ensure the quality and value retention of the vehicles.

Consulting & Planning

Individual requirements call for individual solutions. Our experts support projects from technical design through structural analysis, crane integration, and load securing to coordination with chassis manufacturers and regulatory authorities.

Service & Repair

Our service doesn't end with delivery. In our workshop, we handle repairs, maintenance, and legally required inspections—efficiently organized and with short turnaround times.



OUR SERVICES AT A GLANCE

- **Repair & maintenance of superstructures, trailers, and loading equipment**
- **§20 AM-VO Tailgate inspection**
- **§57a inspection for trailers**
- **Hydraulics & Hose Service**
- **HIAB Service**
- **Spare Parts Supply**

SCHEDULE A SERVICE APPOINTMENT NOW

Robert Koblinger (left)

Service & Repair
Loading Technology

T:+43 7248 62794 149

E:robert.koblinger@gfoellner.at

Robert Engljähringer (right)

Department Lead
Service & Repair

T:+43 7248 62794 160

E:robert.engljaehringner@gfoellner.at

CURRENT CASE STUDIES & REFERENCES

SUCCESS STORIES

Safe-Server configuration with sliding tarp and tail lift

Customer: Grüber Transporte

Requirement: Truck-trailer combination featuring a Safe-Server sliding tarpaulin body. The system offers integrated load securing in accordance with Code XL, as well as opening of the side tarpaulin in a matter of seconds thanks to the elimination of insert slats, center stanchions, and tarpaulin fasteners.

Industry: Distribution traffic



Box body with continuous tail lift

Customer: FCC Austria Abfall Service AG

Requirement: Box body with comprehensive loadsecuring features for use in waste management logistics on a Volvo FM electric truck. Equipped with a high-performance tail lift with a 3,000kg and a calibrated weighing system integrated into the tailgate platform.

Industry: Waste management



Aluminum box body with alcove extension

Customer: Energie AG

Requirement: Aluminum box body with alcove extension to expand storage space. Equipped with a single-leaf sandwich side door and a tail lift for efficient loading and unloading.

Industry: Municipal economy



Mobile brake tester for improved road safety

Customer: Lower Austrian Provincial Government

Requirement: Development of a mobile brake tester for roadside inspections. The project focused on high measurement accuracy, robust construction, and user-friendly operation.

Industry: Municipal economy



Flatbed body with EFFER iQ.1400 HP E-9 front crane

Customer: MAN Truck & Bus Vertrieb Österreich GesmbH

Requirement: A robust flatbed chassis with a high-performance front crane for demanding applications in heavy-duty and assembly work. The crane offers impressive lifting capacity in a compact design, along with precise control for operations requiring long reach and height. The overall design enables flexible applications in construction, assembly, and crane rental.

Industry: Construction industry



FACTS LOAD CAPACITY

- 22,000kg at 4.6m
- 3,860kg at 21.5m
- 1,230kg bei 33.5 m (mit Jib)

Truck-trailer combination with flatbed body and tandem low-loader trailer for transporting construction machinery

Customer: Felbermayr Holding GmbH

Requirement: Road train consisting of an Iveco truck with a flatbed body and a tandem low-loader trailer for transporting construction machinery. Equipped with fully hydraulic ramps, the design allows for easy access to the trailer and truck. All hydraulic functions are operated via a radio remote control.

Industry: Construction industry



Flatbed SafeServer body with sliding tarp

Customer: Welser Profile Austria

Requirement: Flatbed body for the safe transport of profile material in distribution traffic. Equipped with a SafeServer sliding tarpaulin system for quick lateral access and flexible load securing.

Industry: Distribution traffic



Heavy-duty low-loader with precision forced steering

Customer: Eibl Transporte und Erdbewegungen

Requirement: 4-axle low-loader trailer for professional heavy-duty and construction equipment transport. The hydraulic forced steering on both rear axles and the liftable front axle ensure exceptional maneuverability, even in the tightest construction site conditions.

Industry: Construction industry



Flatbed body with rear crane and 2-axle trailer

Customer: Neuhuber Immobilien GmbH

Requirement: A well-designed truck-trailer combination consisting of a 3-axle truck with a flatbed and rear crane, as well as a 2-axle flatbed trailer, for the efficient transport of construction materials. A specially treated aluminum floor increases the coefficient of friction while maintaining a low weight, thereby improving load securing.

Industry: Construction industry



Flatbed body with hydraulic ramps

Customer: Toman/Prangl

Requirement: 4-axle flatbed body with electrohydraulic ramps for the transport of construction machinery. Hot-dip galvanized undercarriage, an electric winch for recovering defective machinery, and a galvanized grating floor with a non-slip finish enable safe and efficient loading and unloading.

Industry: Construction industry





Bodywork for beverage logistics

Customer: Brau Union

Requirement: Gföllner built several beverage bodies on MAN electric trucks for Brau Union. For inner-city distribution, bodies with side-opening roll-up doors were installed, while for intercity transport, Wingliner bodies with hydraulically lifting side walls are used. Load securing tailored to beverage transport, along with safety features such as walk-on side protection, integrated handrails, and anti-slip coatings, enable safe and ergonomic working conditions in daily operations.

Industry: Food industry

Refrigerated box body for meat transport

Customer: Schlachthof Artmayr GesmbH

Requirements: Refrigerated box body compliant with food safety and hygiene regulations. Integrated pipe rail system with continuous hook retention and reinforced roof structure for safe load-bearing capacity. Configuration featuring a double-leaf rear door and a sturdy retractable ladder.

Industry: Food industry



/// Mobile space and event solutions based on high-quality container systems enable flexible space concepts and quickly deployable event infrastructure. Thanks to our many years of experience and a practical approach, reliably and efficiently meet a wide range of customer requirements in fiscal year 2025.



MOBILE CONTAINER SOLUTIONS

/// FLEXIBLE AND MOBILE SPACE SOLUTIONS

**MARTIN
NIMMERVOLL**
HEAD OF MOBILE
CONTAINER
SOLUTIONS



INDUSTRIES IN FOCUS

/// Our mobile containers solutions offer flexible and immediately available solutions for a wide range of applications.

Construction industry

Temporary offices, storage areas, and break rooms for construction sites—modular, stackable, and available on short notice.

Industry & plant construction

Office containers, break rooms, sanitary modules, and storage containers to bridge renovation phases, downtime, or project-related expansions.

Distribution & logistics

Reception containers, office and storage containers, as well as terminals and ticket counters for the efficient management of goods and passenger flows.

Festivals & events

Lounge areas, restroom facilities (toilets, showers), changing rooms, and service and utility containers—designed for high visitor traffic and quick setup times.

Tourism, amusement parks & christmas markets

Sales stands, food service containers, storage containers, and sanitary modules for seasonal peaks and temporary expansions of existing infrastructure.

Public institutions, education & medical offices

Classrooms, medical practice containers, offices, meeting rooms, and restroom facilities as readily available space reserves during renovations, expansions, or short-term needs.

” The 2025 fiscal year was marked by a particularly busy event season in the rental container sector. With the winter-ready BlackLine series, we were able to significantly extend the operational period and successfully position our solutions for winter events and winter sports.”

NEW LOCATION DIERSBACH

- Expanded storage and processing areas
- Optimized logistics
- Shorter turnaround times

MOBILE EVENT SOLUTIONS

Gföllner mobile container solutions are a staple of large-scale events and festivals. Thanks to flexible combinations, space-optimized layout, and quick assembly, they enable high-performance event infrastructure—even in limited spaces.



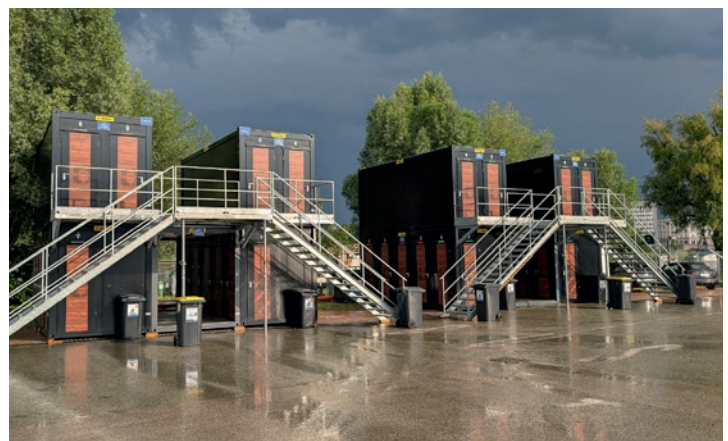
Iron Maiden, Vienna



Woodstock der Blasmusik, Ort im Innkreis



Ö3 Weihnachtswunder, Salzburg



LIDO Sounds, Linz



ELF, Salzburg



THE BLACKLINE IN ACTION

The BlackLine series is designed for year-round use and offers high functionality. Insulated, heated, and built for winter use, it is available in the **Toilet**, **Uri**, and **Mix** models and is specifically designed for events with higher comfort requirements..



World Ski Championships, Saalbach Hinterglemm



Forest Christmas, Advent Market, Kopfing

BLACKLINE 365

MOBILE ROOM SOLUTIONS

Mobile container solutions also prove their worth as reliable space solutions outside the event sector. During renovation and refurbishment projects, they ensure that ongoing operations can continue.



Sparkasse, Andorf

During the renovation work, the containers served as temporary teller and office spaces.



EMPLOYEES AS THE FOUNDATION FOR STABILITY AND THE FUTURE

PEOPLE – EXPERTISE – FUTURE

/// Industrial manufacturing thrives on people who take responsibility and work with precision. At Gföllner, 854 employees at five locations ensure quality, on-time delivery, and technical reliability every day.

From apprentice to executive, from design to assembly. Every role contributes to the overall result. Expertise is systematically developed and firmly established within the company for the long term.

The “Made by Gföllner” standard is not an empty promise, but a living reality—driven by people who take responsibility and think about quality down to the last detail.

Performance thrives where reliable conditions are in place. Gföllner creates a work environment that fosters collaboration and long-term commitment.

”Those who work at Gföllner don’t just work for a company. They work with a team that makes a difference together.“

STEFAN WALCH,
WORKS COUNCIL

A COMMUNITY THAT SUPPORTS

Success does not come from individual achievements, but from the synergy of many. At Gföllner, this sense of unity is actively fostered—in our daily interactions as well as through joint events, sports activities, and internal initiatives. A strong team ensures smooth operations, mutual support, and the reliability our customers expect..



Businessrun Wels



24-hour bike race in Grieskirchen



Joint First Aid Course

EMPLOYEES OVERVIEW

- **854 employees** in total
- **32 apprentices**
- **5 apprenticeship positions** currently available
- **+3 new apprenticeship programs** starting in 2026

DEVELOPING SKILLS— SECURING THE FUTURE

Securing skilled workers is a key success factor. Gföllner therefore continuously invests in training and professional development—from apprenticeship training to leadership development. The Gföllner Academy brings together training and development programs across the company. The goal is to build professional expertise, foster responsibility and create long-term career prospects within the company.

Starting in 2026, the range of training programs will be specifically expanded. In addition to the existing technical apprenticeship programs, three new training paths will be added: **Media Specialist** (Graphics/Print), **Chef**, and **Logistics Specialist**. In this way, Gföllner strengthens both technical and organizational expertise within the company.

**HANNAH
KÖNIGMAYR**
HEAD OF HR



“Our goal is to build long-term prospects—from the first day of the apprenticeship to management responsibilities.”



Apprentice trainer Alexander Berghammer in action on Girls' Day



Apprenticeship Training Team:
Alexander Berghammer (Trainer), Anna Raab and Nina Hochhauser (HR)

CAREERS AT GFÖLLNER

All open positions,
apprenticeships and
insights:



karriere.gfoellner.com



Group photo of apprentices

EMPLOYER BRANDING — “DES GFÖLLT MA”

Authentic, regional, visible

In 2025, the employer brand was strategically refined. Under the motto “Des gföllt ma,” Gföllner puts the people within the company at the center and showcases its work environment to the outside world. The goal is to retain existing employees longterm while simultaneously attracting new skilled workers and up-and-coming talent to the company. The focus is on authentic communication with genuine insights into everyday work life and the people behind the projects.



Billboard advertising “das gföllt ma”

REGIONAL VISIBILITY

- Billboard advertising in Upper Austria
- Cinema advertising in the region
- Bus and Train Station Advertising



Video-Shooting Employer Branding Campaign

DIGITAL & SOCIAL MEDIA

- Instagram, Facebook, LinkedIn, YouTube
- Videos: Career Insights
- Insights into production and work environments



Jugend & Beruf, Wels

RECRUITING

- Career fairs with a modern booth
- Print ads for jobs and brand image

STRONG PARTNERSHIPS & NETWORKS

Technological leadership arises from the synergy of specialized expertise. Gföllner strategically leverages partnerships and networks to accelerate the transformation of innovations into industrial solutions.

Through close collaboration with experienced companies, we pool expertise, technologies, and market access—thereby delivering solutions that provide clear added value in terms of quality, efficiency, and sustainability.

FEAG

Gföllner relies on targeted partnerships when it comes to sustainable and future-oriented solutions. Together with the FEAG Group, an experienced provider of electrical systems with over 70 years of market experience, we combine our strengths in the energy sector.

The collaboration focuses on compact transformer stations (CTS) specifically designed for applications in the renewable energy sector. A joint production site in Rozvadov (CZ) complements the existing FEAG locations in Bremen, St. Ingbert, and Komárno.



[tecbox]

With [tecbox], we and our partner combine our expertise into a single, industrially prefabricated integrated system for home and building technology: Instead of manually combining individual components such as heating, solar PV, storage, or wallboxes on-site, [tecbox] relies on a **preconfigured, industrially manufactured integrated system**. The **modular technical container** is delivered ready to plug in—including controls, energy management, and complete installation.

[tecbox] brings **efficiency, standardization, and digitalization** to an environment that has traditionally been dominated by manual craftsmanship.

KEY FACTS

- **All-in-one system:** building services & energy management
- **Prefabricated technical room:** modular & compact
- **Quick installation:** ready for immediate operation
- **Future-proof:** Expandable & flexible





PRECISION *IN* MOTION

For more than 130 years, Gföllner has been combining precision, technology and customer orientation in vehicle construction and container technology to create unique and sustainable solutions that inspire and move people.

Gföllner Fahrzeugbau und Containertechnik GmbH

Let's stay connected:



www.gfoellner.at